

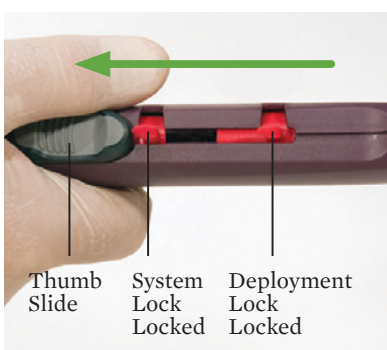
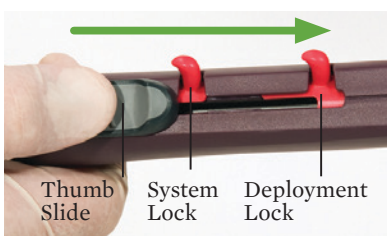
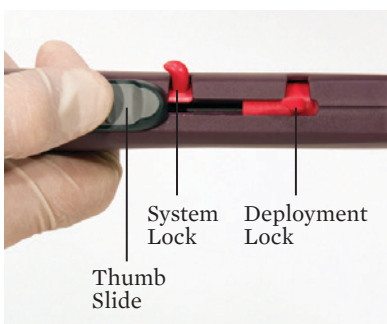
THREE KEYS FOR OPTIMAL STENT DEPLOYMENT

- 1 PRE-DILATE**
- Pre-dilate the lesion to \geq the outer diameter of the stent
 - Longer inflation times recommended

- 2 SIZE 1:1**
- Match stent size 1:1 to vessel diameter
 - Do not oversize the stent

- 3 DEPLOY SLOWLY**
- Magnify imaging to observe cell geometry
 - Use short, even throws of the Thumb Slide
- Open the Deployment Lock and fully advance Thumb Slide to completely release the stent
 - Visually confirm stent release
- Retract the tip and lock the Thumb Slide before withdrawal
 - Post-dilate as needed

DEPLOYMENT STEPS AND TECHNIQUE

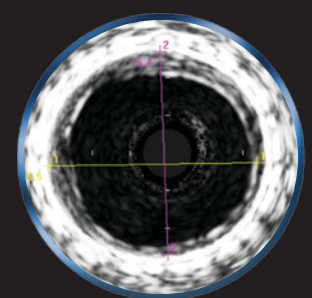


1. Flush the delivery system with saline, wipe the outer sheath to activate the hydrophilic coating, and load the distal end of the tip onto a 0.014" or 0.018" guide wire.
2. Advance the catheter until the Distal Sheath Marker and Stent Length Marker encompass the target lesion.
3. Rotate only the System Lock to the unlocked position.
4. Increase and maintain magnification for entire procedure to better visualize stent deployment.
5. Under fluoroscopy, initiate stent deployment by advancing the Thumb Slide while allowing the outer sheath to retract proximally.
6. Under fluoroscopy, continuously and slowly retract and advance the Thumb Slide multiple times. Shorter Thumb Slide advancements may provide greater control. Repeat until Thumb Slide advancement no longer deploys the stent.
7. Rotate the Deployment Lock to the unlocked position and fully advance the Thumb Slide to completely release the stent.
8. Confirm under fluoroscopy that the entire stent is released.
9. Fully retract the Thumb Slide to the starting position, then rotate the System Lock and Deployment Lock into the locked position.
10. Remove the device under fluoroscopy.
11. Post-dilate as needed.

Prior to use, see Supera IFU.



IT'S A COMPLEX WORLD.
CONQUER THE COMPLEX.



PASSIONATE *about* PERIPHERAL

INDICATIONS

The **Supera Peripheral Stent System** is indicated to improve luminal diameter in the treatment of patients with symptomatic *de novo* or restenotic native lesions or occlusions of the superficial femoral artery (SFA) and/or proximal popliteal artery with reference vessel diameters of 4.0 to 6.5 mm, and lesion lengths up to 140 mm.

See Important Safety Information at bottom of webpage.